

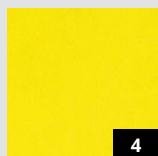


# TRENDS | 1.8<sup>A</sup>

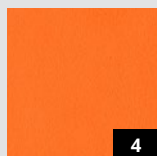
OVERVIEW GB

**SIBU | DESIGN**  
we decorate.

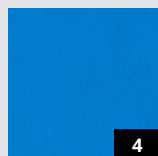
# LEATHER-LINE



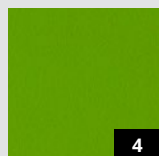
LL Lemon  
Yellow  
Antigrav



LL Pumpkin  
Orange  
Antigrav

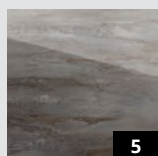


LL Cobalt  
Blue Antigrav



LL Apple  
Green Antigrav

# SIBUGLAS



SG GENESIS  
Grey AR+



SG SHATTERED  
Silver AR+



SG SHATTERED  
Champagne AR+



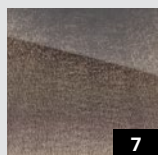
SG SHATTERED  
Rose AR+



SG SHATTERED  
Brown AR+



SG SHATTERED  
Grey AR+



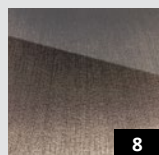
SG CURVED  
Silver AR+



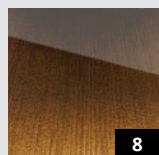
SG CURVED  
Gold AR+



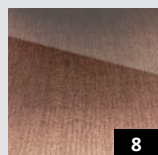
SG CURVED  
Rose AR+



SG ALIGNED  
Silver AR+



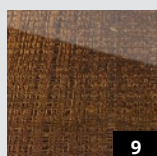
SG ALIGNED  
Gold AR+



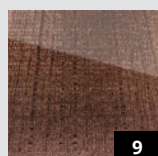
SG ALIGNED  
Rose AR+



SG GRID  
Silver AR+



SG GRID  
Gold AR+

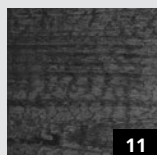


SG GRID  
Rose AR+

# WOOD-LINE

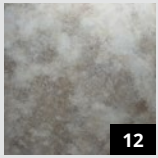


WL Carbonized  
Wood



WL Carbonized  
Wood Antigrav

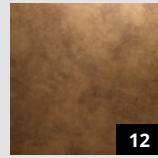
# DECO-LINE



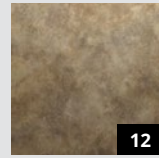
DM OXIDIZED  
Silver AR



DM OXIDIZED  
Autumn AR



DM OXIDIZED  
Copper AR



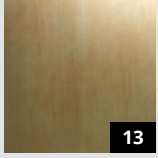
DM OXIDIZED  
Nickel AR



DM OXIDIZED  
Platin AR



DM OXIDIZED  
Titan AR



DM SLIGHTLY  
USED Gold AR



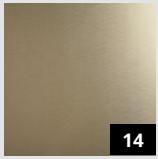
DM SLIGHTLY  
USED Bronze AR



DM SLIGHTLY  
USED Copper AR



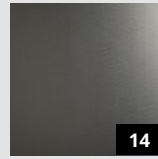
DM SLIGHTLY  
USED Titan AR



DM METALLIC  
USED  
Champagne AR



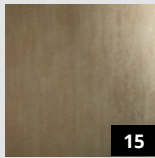
DM METALLIC  
USED Silver AR



DM METALLIC  
USED Titan AR



DM METALLIC  
USED Ivory AR



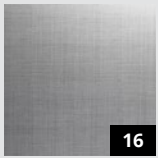
DM METALLIC  
USED Sand AR



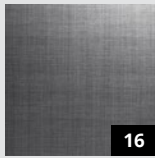
DM METALLIC  
USED Bronze AR



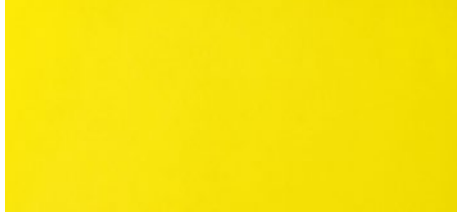
DM METALLIC  
USED Steel AR



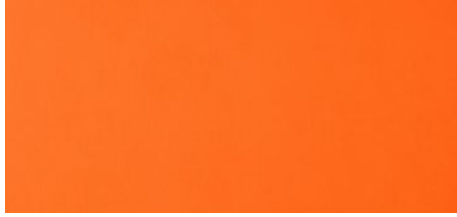
DM REFINED  
METAL Silver AR



DM REFINED  
METAL Titan AR



**LL Lemon Yellow AntigraV**  
2600 x 1000 / NA 20425



**LL Pumpkin Orange AntigraV**  
2600 x 1000 / NA 20424



**LL Cobalt Blue AntigraV**  
2600 x 1000 / NA 20422



**LL Apple Green AntigraV**  
2600 x 1000 / NA 20423

2600 x 1000



Photo: iStock.com

## LEATHER-LINE

# LL ANTIGRAV

### Product characteristics

	NA	SA
Base material	PP-glass fibres	
Surface material	PU-leather	
Material thickness mm	3,8	3,93
Temperature stability	up to 60 °C	
Wet room suitability	■■■■■	
Rolled packable	—	—

### Processing

	NA	SA
Cutting, punching	✓	✓
Drilling	✓	✓
Sawing	✓	—
Laser cutting	✓	✓
Hot bending	—	—
PVA compressible	✓	—
Smallest bending radius	1000 mm	

### Extra equipment

	NA	SA
Special formats	—	—
Further thicknesses	—	—
Cuttings	✓	✓
Magnetic from 3 sheets*	✓	
PVA pre-treatment	—	—

### Accessories

SIBU SILICON 1.4A	✓
SIBUKLE	Spatula A2

### Special colors

On request
------------

\* Ground must be a SIBU metal foil SA (ref. 17637, self adhesive).





□  
SG GENESIS  
Grey AR+

Photo: © istock.com



**SG GENESIS Grey AR+**  
2600 x 1000 / NA 20185 / SA 20223

**SIBUGLAS** scratch-resistant

# SG GENESIS Grey AR+

2600 x 1000

## Product characteristics

	NA	SA
Surface material	PMMA	
Back side material	Paper	
Material thickness mm	2,3	2,43
Temperature stability	up to 60 °C	
Wet room suitability	■■■■	
Abrasion resistance	■■■■■■■■	
Rolled packable	—	—

## Processing

	NA	SA
Cutting, punching	—	—
Drilling	✓	✓
Sawing (supported by a panel)	✓	✓
Laser cutting	✓	✓
Hot bending	—	—
PVA compressible	✓	—
Smallest bending radius	1000 mm	

## Extra equipment

	NA	SA
Special formats	✓	✓
Maximum length mm	3000	
Maximum width mm	1000	
Further thicknesses	✓	✓
Cuttings	✓	✓
Magnetic from 3 sheets *	✓	
PVA pre-treatment	—	—

\* Ground must be a SIBU metal foil SA (ref. 17637, self adhesive).

## Accessories

SIBUKLE	Spatula A2
Profile groups	3 / 5

## Special colors

—
---

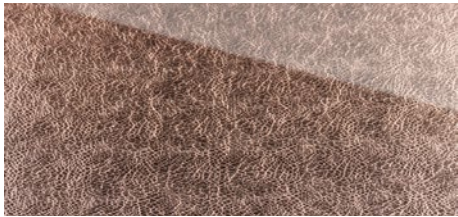




**SG SHATTERED Silver AR+**  
2600 x 1000 / NA 20168 / SA 20206



**SG SHATTERED Champagne AR+**  
2600 x 1000 / NA 20174 / SA 20212



**SG SHATTERED Rose AR+**  
2600 x 1000 / NA 20175 / SA 20213

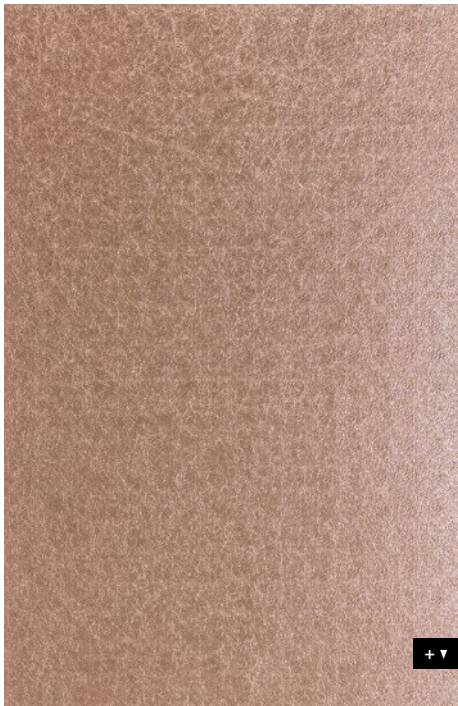


**SG SHATTERED Brown AR+**  
2600 x 1000 / NA 20173 / SA 20211



**SG SHATTERED Grey AR+**  
2600 x 1000 / NA 20172 / SA 20210

2600 x 1000



☐  
SG SHATTERED Rose AR+

Photo: © istock.com

**SIBUGLAS** scratch-resistant

# SG SHATTERED AR+

## Product characteristics

	NA	SA
Base material	PMMA	
Surface material	PU-leather	
Material thickness mm	2,6	2,73
Temperature stability	up to 60 °C	
Wet room suitability	■■■■■	
Abrasion resistance	■■■■■■■	
Rolled packable	—	—

## Processing

	NA	SA
Cutting, punching	—	—
Drilling	✓	✓
Sawing	✓	✓
Laser cutting	✓	✓
Hot bending	—	—
PVA compressible	✓	—
Smallest bending radius	1000 mm	

## Extra equipment

	NA	SA
Special formats	✓	✓
Maximum length mm	3000	
Maximum width mm	1000	
Further thicknesses	✓	✓
Cuttings	✓	✓
Magnetic from 3 sheets*	✓	
PVA pre-treatment	—	—

## Accessories

SIBUKLE	Spatula A2
Profile groups	3 / 5

## Special colors

—
---

\* Ground must be a SIBU metal foil SA (ref. 17637, self adhesive).



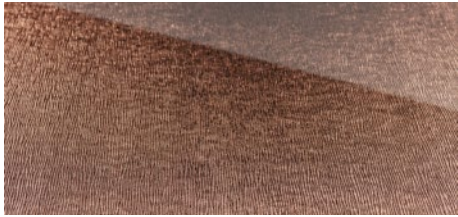




**SG CURVED Silver AR+**  
2600 x 1000 / NA 20177 / SA 20215



**SG CURVED Gold AR+**  
2600 x 1000 / NA 20176 / SA 20214



**SG CURVED Rose AR+**  
2600 x 1000 / NA 20178 / SA 20216



Photo: © istock.com

2600 x 1000



**SIBUGLAS** scratch-resistant

# SG CURVED AR+

## Product characteristics

	NA	SA
Base material	PMMA	
Surface material	PU-leather	
Material thickness mm	2,9	3,03
Temperature stability	up to 60 °C	
Wet room suitability	■■■■■	
Abrasion resistance	■■■■■■■	
Rolled packable	—	—

## Extra equipment

	NA	SA
Special formats	✓	✓
Maximum length mm	3000	
Maximum width mm	1000	
Further thicknesses	✓	✓
Cuttings	✓	✓
Magnetic from 3 sheets*	✓	
PVA pre-treatment	—	—

\* Ground must be a SIBU metal foil SA (ref. 17637, self adhesive).

## Processing

	NA	SA
Cutting, punching	—	—
Drilling	✓	✓
Sawing	✓	✓
Laser cutting	✓	✓
Hot bending	—	—
PVA compressible	✓	—
Smallest bending radius	1000 mm	

## Accessories

SIBUKLE	Spatula A2
Profile groups	3 / 5

## Special colors

—
---





**SG ALIGNED Silver AR+**  
2600 x 1000 / NA 20180 / SA 20219



**SG ALIGNED Gold AR+**  
2600 x 1000 / NA 20179 / SA 20218



**SG ALIGNED Rose AR+**  
2600 x 1000 / NA 20181 / SA 20217



Photo: © istock.com

2600 x 1000



**SIBUGLAS** scratch-resistant

# SG ALIGNED AR+

## Product characteristics

	NA	SA
Base material	PMMA	
Surface material	PU-leather	
Material thickness mm	2,9	3,03
Temperature stability	up to 60 °C	
Wet room suitability	■■■■■	
Abrasion resistance	■■■■■■■	
Rolled packable	—	—

## Processing

	NA	SA
Cutting, punching	—	—
Drilling	✓	✓
Sawing	✓	✓
Laser cutting	✓	✓
Hot bending	—	—
PVA compressible	✓	—
Smallest bending radius	1000 mm	

## Extra equipment

	NA	SA
Special formats	✓	✓
Maximum length mm	3000	
Maximum width mm	1000	
Further thicknesses	✓	✓
Cuttings	✓	✓
Magnetic from 3 sheets*	✓	
PVA pre-treatment	—	—

## Accessories

SIBUKLE	Spatula A2
Profile groups	3 / 5

## Special colors

—
---

\* Ground must be a SIBU metal foil SA (ref. 17637, self adhesive).







**SG GRID Silver AR+**  
2600 x 1000 / NA 20183 / SA 20222



**SG GRID Gold AR+**  
2600 x 1000 / NA 20182 / SA 20221



**SG GRID Rose AR+**  
2600 x 1000 / NA 20184 / SA 20220



Photo: © istock.com

2600 x 1000



**SIBUGLAS** scratch-resistant

# SG GRID AR+

## Product characteristics

	NA	SA
Base material	PMMA	
Surface material	PU-leather	
Material thickness mm	2,9	3,03
Temperature stability	up to 60 °C	
Wet room suitability	■■■■■	
Abrasion resistance	■■■■■■■	
Rolled packable	—	—

## Processing

	NA	SA
Cutting, punching	—	—
Drilling	✓	✓
Sawing	✓	✓
Laser cutting	✓	✓
Hot bending	—	—
PVA compressible	✓	—
Smallest bending radius	1000 mm	

## Extra equipment

	NA	SA
Special formats	✓	✓
Maximum length mm	3000	
Maximum width mm	1000	
Further thicknesses	✓	✓
Cuttings	✓	✓
Magnetic from 3 sheets*	✓	
PVA pre-treatment	—	—

## Accessories

SIBUKLE	Spatula A2
Profile groups	3 / 5

## Special colors

—
---

\* Ground must be a SIBU metal foil SA (ref. 17637, self adhesive).



□  
WL Carbonized Wood



**WL Carbonized Wood**  
2600 x 1000 / NA 20157 / SA 20224

Photo: © istock.com

## WOOD-LINE

# WL Carbonized Wood

2600 x 1000



### Product characteristics

	NA	SA
Base material	HIPS	
Surface material	impregnated paper	
Material thickness mm	1,3	1,43
Temperature stability	up to 60 °C	
Wet room suitability	■■■■□	
Abrasion resistance	■■■■□□	
Rolled packable **	✓	✓

### Extra equipment

	NA	SA
Special formats	✓	✓
Maximum length mm	3000	
Maximum width mm	1220	
Further thicknesses	✓	✓
Cuttings	✓	✓
Magnetic from 3 sheets***	✓	
PVA pre-treatment	✓	—

### Processing

	NA	SA
Cutting, punching	✓	✓
Drilling	✓	✓
Sawing, milling	✓	—
Laser cutting	✓	✓
Hot bending	✓	—
Thermoforming	—	—
PVA compressible	✓	—
Smallest bending radius	150 mm	

### Accessories

SIBUKLE	Spatula A1
Profile groups	1 / 2 / 3 / 5

### Special colors

—
---

\* Prior to printing a corona or plasma treatment has to be carried out. Upon request available in pre-treated version.  
 \*\* Design sheets are to be rolled with the patterned side on the inside (applies for both the NA and SA versions).  
 We recommend that not more than 3 sheets be rolled per carton (480 x 480 mm).  
 \*\*\* Ground must be a SIBU metal foil SA (ref. 17637, self adhesive).





□  
WL Carbonized Wood Antigrav

Photo: © fotolia.com



PR+\*

**WL Carbonized Wood Antigrav**  
2600 x 1000 / NA 20158

## WOOD-LINE

# WL Carbonized Wood Antigrav

2600 x 1000



### Product characteristics

	NA	SA
Base material	PP-glass fibres	
Surface material	impregnated paper	
Material thickness mm	3,3	3,43
Temperature stability	up to 60 °C	
Wet room suitability	■■■■□	
Abrasion resistance	■■■■□□	
Rolled packable	—	—

### Processing

	NA	SA
Cutting, punching	✓	✓
Drilling	✓	✓
Sawing, milling	✓	—
Laser cutting	✓	✓
Hot bending	—	—
Thermoforming	—	—
PVA compressible	✓	—
Smallest bending radius	1000 mm	

### Extra equipment

	NA	SA
Special formats	✓	✓
Maximum length mm	3000	3000
Maximum width mm	1220	1220
Further thicknesses	—	—
Cuttings	✓	✓
Magnetic from 3 sheets**	✓	
PVA pre-treatment	—	—

### Accessories

SIBUKLE	Spatula A2
Profile groups	4

### Special colors

—
---

\* Prior to printing a corona or plasma treatment has to be carried out.  
Upon request available in pre-treated version.

\*\* Ground must be a SIBU metal foil SA (ref. 17637, self adhesive).



□ DM OXIDIZED Silver AR

□ DM OXIDIZED Platin AR

□ DM OXIDIZED Titan AR

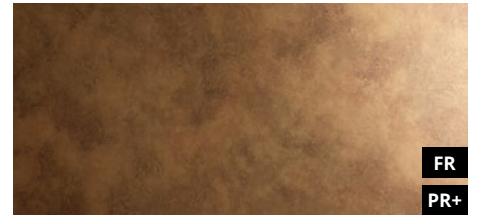
Photo: © istock.com



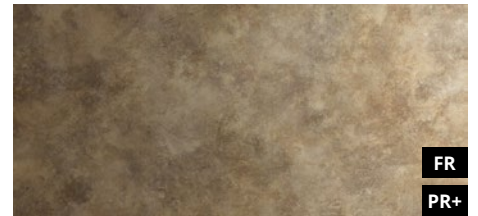
**DM OXIDIZED Silver AR**  
2600 x 1000 / NA 20139 / SA 20187



**DM OXIDIZED Autumn AR**  
2600 x 1000 / NA 20143 / SA 20191



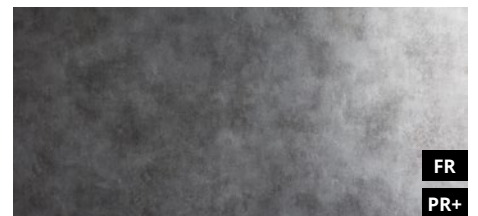
**DM OXIDIZED Copper AR**  
2600 x 1000 / NA 20138 / SA 20186



**DM OXIDIZED Nickel AR**  
2600 x 1000 / NA 20140 / SA 20188



**DM OXIDIZED Platin AR**  
2600 x 1000 / NA 20141 / SA 20189



**DM OXIDIZED Titan AR**  
2600 x 1000 / NA 20142 / SA 20190



2600 x 1000

## DECO-LINE abrasion-resistant

# DM OXIDIZED AR

### Product characteristics

	NA	SA
Base material	HIPS	
Surface material	Print	
Material thickness mm	1,0	1,13
Temperature stability	up to 60 °C	
Wet room suitability	■■■■□	
Abrasion resistance	■■■■■■■	
Rolled packable	✓	✓

### Extra equipment

	NA	SA
Special formats	✓	✓
Maximum length mm	3000	3000
Maximum width mm	1250	1220
Further thicknesses	✓	✓
Cuttings	✓	✓
Magnetic from 3 sheets *	✓	
PVA pre-treatment	✓	—

\* Ground must be a SIBU metal foil SA (ref. 17637, self adhesive).

### Processing

	NA	SA
Cutting, punching	✓	✓
Drilling	✓	✓
Sawing, milling	✓	—
Laser cutting	✓	✓
Hot bending	—	—
Thermoforming	—	—
PVA compressible	✓	—
Smallest bending radius	150 mm	

### Accessories

SIBUKLE	Spatula A1
Profile groups	1 / 2 / 3 / 5

### Special colors

—
---





Photo: © istock.com



FR

PR+

**DM SLIGHTLY USED Gold AR**

2600 x 1000 / NA 20153 / SA 20201



FR

PR+

**DM SLIGHTLY USED Bronze AR**

2600 x 1000 / NA 20152 / SA 20200



FR

PR+

**DM SLIGHTLY USED Copper AR**

2600 x 1000 / NA 20151 / SA 20199



FR

PR+

**DM SLIGHTLY USED Titan AR**

2600 x 1000 / NA 20154 / SA 20202

**DECO-LINE** abrasion-resistant

# DM SLIGHTLY USED AR

**Product characteristics**

	NA	SA
Base material	HIPS	
Surface material	Print	
Material thickness mm	1,0	1,13
Temperature stability	up to 60 °C	
Wet room suitability	■■■■□	
Abrasion resistance	■■■■■■■	
Rolled packable	✓	✓

**Extra equipment**

	NA	SA
Special formats	✓	✓
Maximum length mm	3000	3000
Maximum width mm	1250	1220
Further thicknesses	✓	✓
Cuttings	✓	✓
Magnetic from 3 sheets *	✓	
PVA pre-treatment	✓	—

\* Ground must be a SIBU metal foil SA (ref. 17637, self adhesive).

**Processing**

	NA	SA
Cutting, punching	✓	✓
Drilling	✓	✓
Sawing, milling	✓	—
Laser cutting	✓	✓
Hot bending	—	—
Thermoforming	—	—
PVA compressible	✓	—
Smallest bending radius	150 mm	

**Accessories**

SIBUKLE	Spatula A1
Profile groups	1 / 2 / 3 / 5

**Special colors**

—
---

2600 x 1000





Photo: © istock.com



FR

PR+

**DM METALLIC USED Champagne AR**  
2600 x 1000 / NA 20150 / SA 20198



FR

PR+

**DM METALLIC USED Silver AR**  
2600 x 1000 / NA 20145 / SA 20193



FR

PR+

**DM METALLIC USED Titan AR**  
2600 x 1000 / NA 20144 / SA 20192

**DECO-LINE** abrasion-resistant

# DM METALLIC USED AR

## Product characteristics

	NA	SA
Base material	HIPS	
Surface material	Print	
Material thickness mm	1,0	1,13
Temperature stability	up to 60 °C	
Wet room suitability	■■■■□	
Abrasion resistance	■■■■■■■	
Rolled packable	✓	✓

## Extra equipment

	NA	SA
Special formats	✓	✓
Maximum length mm	3000	3000
Maximum width mm	1250	1220
Further thicknesses	✓	✓
Cuttings	✓	✓
Magnetic from 3 sheets *	✓	
PVA pre-treatment	✓	—

\* Ground must be a SIBU metal foil SA (ref. 17637, self adhesive).

## Processing

	NA	SA
Cutting, punching	✓	✓
Drilling	✓	✓
Sawing, milling	✓	—
Laser cutting	✓	✓
Hot bending	—	—
Thermoforming	—	—
PVA compressible	✓	—
Smallest bending radius	150 mm	

## Accessories

SIBUKLE	Spatula A1
Profile groups	1 / 2 / 3 / 5

## Special colors

—
---

2600 x 1000







□  
DM METALLIC USED Steel AR

Photo: © istock.com



FR  
PR+

**DM METALLIC USED Ivory AR**  
2600 x 1000 / NA 20149 / SA 20197



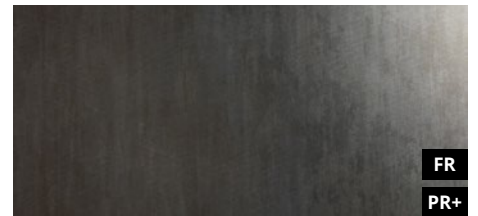
FR  
PR+

**DM METALLIC USED Sand AR**  
2600 x 1000 / NA 20147 / SA 20195



FR  
PR+

**DM METALLIC USED Bronze AR**  
2600 x 1000 / NA 20146 / SA 20194



FR  
PR+

**DM METALLIC USED Steel AR**  
2600 x 1000 / NA 20148 / SA 20196

**DECO-LINE** abrasion-resistant

# DM METALLIC USED AR

## Product characteristics

	NA	SA
Base material	HIPS	
Surface material	Print	
Material thickness mm	1,0	1,13
Temperature stability	up to 60 °C	
Wet room suitability	■■■■□	
Abrasion resistance	■■■■■■■	
Rolled packable	✓	✓

## Extra equipment

	NA	SA
Special formats	✓	✓
Maximum length mm	3000	3000
Maximum width mm	1250	1220
Further thicknesses	✓	✓
Cuttings	✓	✓
Magnetic from 3 sheets *	✓	
PVA pre-treatment	✓	—

\* Ground must be a SIBU metal foil SA (ref. 17637, self adhesive).

## Processing

	NA	SA
Cutting, punching	✓	✓
Drilling	✓	✓
Sawing, milling	✓	—
Laser cutting	✓	✓
Hot bending	—	—
Thermoforming	—	—
PVA compressible	✓	—
Smallest bending radius	150 mm	

## Accessories

SIBUKLE	Spatula A1
Profile groups	1 / 2 / 3 / 5

## Special colors

—
---

2600 x 1000

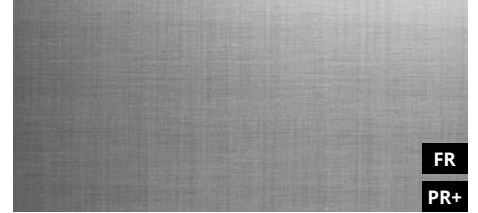


+ ▼



DM REFINED METAL Titan AR

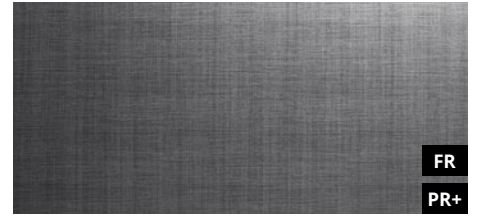
Photo: © istock.com



FR

PR+

**DM REFINED METAL Silver AR**  
2600 x 1000 / NA 20155 / SA 20203



FR

PR+

**DM REFINED METAL Titan AR**  
2600 x 1000 / NA 20156 / SA 20204

**DECO-LINE** abrasion-resistant

# DM REFINED METAL AR

2600 x 1000

## Product characteristics

	NA	SA
Base material	HIPS	
Surface material	Print	
Material thickness mm	1,0	1,13
Temperature stability	up to 60 °C	
Wet room suitability	■■■■□	
Abrasion resistance	■■■■■■■	
Rolled packable	✓	✓

## Extra equipment

	NA	SA
Special formats	✓	✓
Maximum length mm	3000	3000
Maximum width mm	1250	1220
Further thicknesses	✓	✓
Cuttings	✓	✓
Magnetic from 3 sheets *	✓	
PVA pre-treatment	✓	—

\* Ground must be a SIBU metal foil SA (ref. 17637, self adhesive).

## Processing

	NA	SA
Cutting, punching	✓	✓
Drilling	✓	✓
Sawing, milling	✓	—
Laser cutting	✓	✓
Hot bending	—	—
Thermoforming	—	—
PVA compressible	✓	—
Smallest bending radius	150 mm	

## Accessories

SIBUKLE	Spatula A1
Profile groups	1 / 2 / 3 / 5

## Special colors

—
---



**NA**

non-adhesive

**SA**

strongly adhesive

**FR**

flame-retardant  
version available on request

**PR**

digital printing possible

**PR+**

digital/screen printing possible

**PR+\***

digital/screen printing possible  
Prior to printing a corona or plasma  
treatment has to be carried out.  
By request available in pre-treated version.



wet room suitability



limited suitability for wet rooms

**AR**

abrasion-resistant

**AR+**

scratch-resistant



entire panel length not shown in image

**SIBU | DESIGN**  
we decorate.

SIBU DESIGN GmbH & CoKG  
Jupiterstraße 8 - 4452 Ternberg - Austria - Tel.: +43 (0) 7256.6025.0  
Fax: +43 (0) 7256.7020 - E-mail: [info@sibu.at](mailto:info@sibu.at) - [www.sibu.at](http://www.sibu.at)

**SIBU**|DESIGN\_0118\_GB